

## Event Features

### (1) The only cycling event in Japan that takes place on an expressway

All courses include expressways traveling across the bridges from island to island. Participants are able to cycle on roads that are normally reserved for vehicles and enjoy a sense of freedom as they ride during this cycling event. Cycling Shimanami 2020 is the only cycling event in Japan where participants can ride on the main roads of an expressway.

### (2) International fun riding event using a world-class cycling course

Set in the "Setouchi Shimanami Kaido", a world class cycling course that was designated by the national government as one of the "National Cycle Routes" in November 2019, the event welcomes 3,500 participants from Japan and overseas. The cycling road runs through the scenic Setonaikai, where many small islands float on a calm sea. It is often referred to across the world as a "Sacred Place for Cyclists".

### (3) Course that features the beauty of the Seto Inland Sea Shimanami Kaido

The diverse courses that allow participants to enjoy the wonderful scenery and beautiful natural features of the "Setouchi Shimanami Kaido" are a major attraction of Cycling Shimanami 2020. Five courses in accordance with skill level and preference have been prepared. These includes: a long course with a round trip over the "Setouchi Shimanami Kaido"; a middle course that travels refreshingly through Imabari and Onomichi; a cruising course that involves a ferry ride together with cycling; and a fun course that can be enjoyed by both beginners and families.

### (4) Experience "Omotenashi" Hospitality from the Islanders of Setouchi

Participants will be able to enjoy the natural landscape, including the beauty of the tiny dotted islands, the history and culture of each island, and the delicious food from the rich nature of the Seto Inland Sea. Participants will also experience the warm hearts and hospitality of the islanders through the roadside aid stations and spectators on each island.

## Access

### Imabari [Reception Desk・Main Venue]

[By JR train]  
Okayama via super express→JR Imabari Station (about 2 hours 10 minutes)

[Access from Matsuyama Airport]  
Matsuyama Airport →(Limousine Bus : About 15 minutes)→JR Matsuyama Station→  
(Yosan Line Limited Express: About 40 minutes)→JR Imabari Station→  
(City Bus: About 7 minutes)→ Oshinden Park

[By Airplane]  
Tokyo (Narita)  
Tokyo (Haneda)  
Sapporo (Chitose)  
Nagoya (Chubu)  
Osaka (Itami)  
Fukuoka Airport  
Kagoshima Airport  
Okinawa (Naha)  
Shanghai  
Seoul  
Taipei

[Orange Ferry]  
Osaka→Toyo Port  
(\*Toyo Port→Imabari  
Free Shuttle Bus is Available)  
[Car Ferry Ship]  
Hiroshima→Matsuyama  
/ about 160 minutes  
[Super Jet]  
Hiroshima→Matsuyama  
/ about 70 minutes

### Matsuyama [Reception Desk]

[By JR train]  
Okayama via super express→JR Matsuyama Station  
(about 2 hours 50 minutes)

[Access from Matsuyama Airport]  
Matsuyama Airport→(Limousine Bus: About 30 minutes)→  
Okaido→(On Foot: About 4 minutes)→Ehime Prefectural Office



[Road Closed]  
Imabari IC ⇐ Nishiseto Expressway up-down line ⇒ Innoshima Kita IC  
■ Sunday, October 25, 2020  
■ Traffic will be restricted between 6:00 a.m. ~12:00 p.m. (about 6 hours)  
Please be careful with the time and transportation on the event day (Sunday, October 25).  
Some roads will be restricted around the courses and venues.

## Shuttle bus service

\*Both are paid services and there is no restriction on the number of passengers.  
The shuttle bus course may be altered. Details will be shown on the official event homepage.

A shuttle bus service will be offered for event participants (set package with transport of bicycle by truck).

[ Premium entry ] apply after entry finalization [ General entry ] apply after selection

### ●Pre-start

Shuttle bus		Bicycle transport truck	
Day of event	Onomichi→Imabari	Day before event	Check in the bicycle at reception on the day before the event (venue) and receive the bicycle at the shuttle bus drop-off point (Imabari) on the day of the event.
Day of event	Imabari→Onomichi	Day before event	Check in the bicycle at reception on the day before the event (venue) and receive the bicycle at the shuttle bus drop-off point (Onomichi) on the day of the event.

\*A special charter boat (charged) service will be offered from Kamijima to each of the start venues.

### ●Post-finish

Shuttle bus		Bicycle transport truck	
Day of event	Imabari→Onomichi/Fukuyama	Day of event	Check in the bicycle before getting on the shuttle bus and receive the bicycle upon drop-off.
Day of event	Onomichi→Imabari	Day of event	Check in the bicycle before getting on the shuttle bus and receive the bicycle upon drop-off.

## Operation of special cycle train service

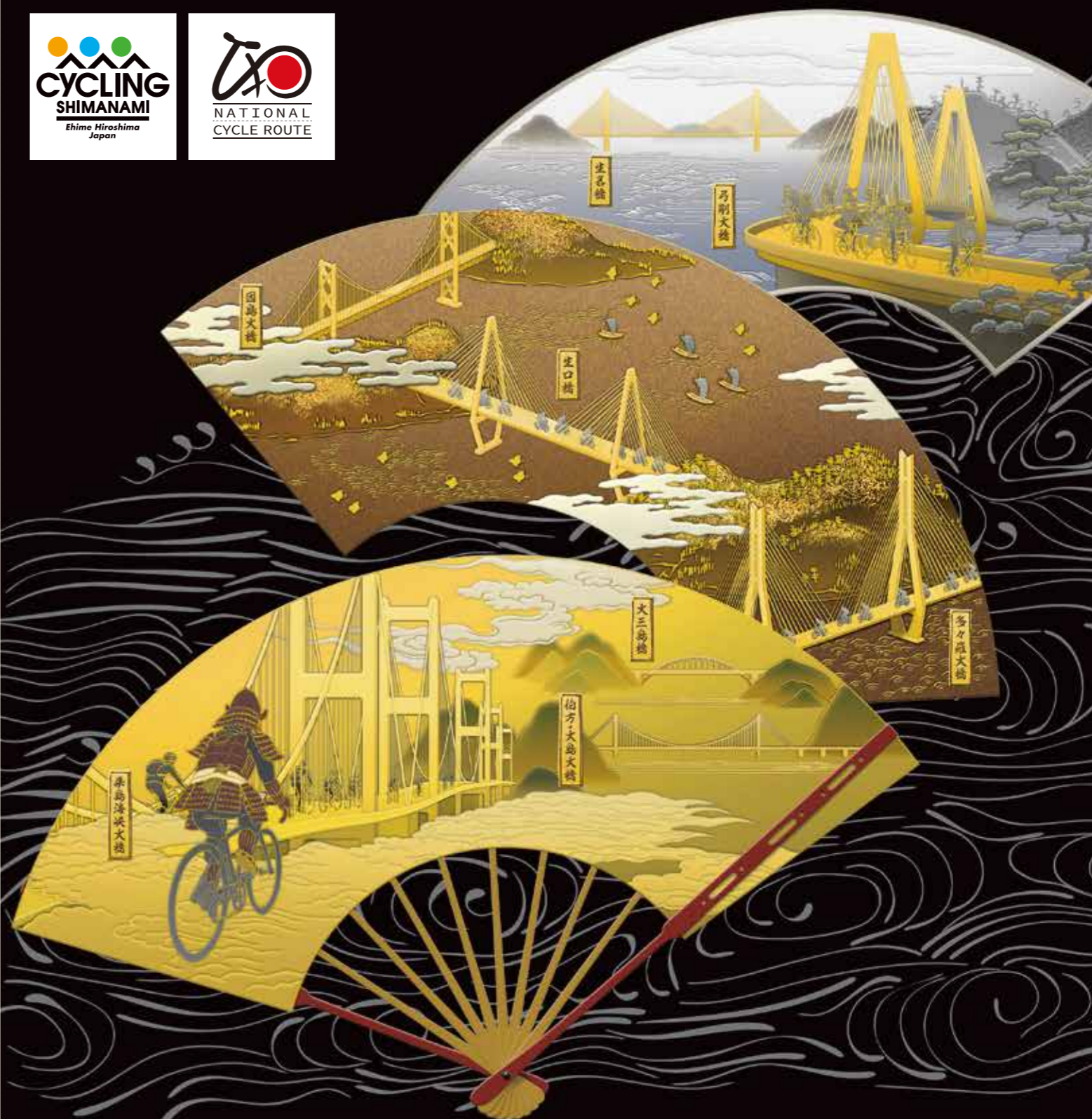
\*Paid Service: restriction on the number of passengers.  
Details will be shown on the official event homepage.

On the day of the event, a special cycle train service will be operated for event participants from JR Matsuyama Station to JR Imabari Station and JR Fukuyama Station to JR Onomichi Station.

## Notes

\*For details, see the event rules on the official event homepage.

- This event is not about position or time. Please obey traffic rules during the event.
- During the event, follow the directions of police, security personnel and event officials.



Ride across Inland Sea of Japan

Setouchi Shimanami Kaido International Cycling Event

# CYCLING SHIMANAMI 2020

2020.10.25 SUN

A massive cycling event featuring a famous expressway and spectacular islands

- Date: [Check-in] Saturday, October 24, 2020 [Event] Sunday, October 25, 2020
- Course location: Setouchi Shimanami Kaido and Surrounding Area / about 40 km~140 km (5 courses)
- [ Start Venue ] In front of the first Imabari Shintoshu (Nishiseto drive way Imabari IC) Mukaishima Sports Park (Onomichi)
- [ Finish Venue ] Oshinden Park (Imabari), Shinhama Kenei Uwaya (Onomichi), Yuge Port (Kamijima)
- Organizer: Cycling Shimanami 2020 Executive Committee
- Application period:  
[ Premium Entry ] Monday, June 1 to Friday, June 26 <first-come-first-served basis>  
(Package of Marathon entry + Local specialties + the event special jersey)
- [ General Entry ] Monday, June 1 to Friday, June 26 <lottery>
- How to apply: Online application etc. (Please refer to the official website below)
- Capacity: 3,500 people
- Style: Non-competitive public cycling event.

Application period has been changed.

<https://cycling-shimanami.jp/english/>

Application related inquiries

**CYCLING Shimanami 2020 entry center**

TEL: +81-570-03-1900 Office Hours: 10:00~17:00 Office Closed: Every Weekends and National Holidays

Event related inquiries

Cycling Shimanami 2020 Executive Committee Imabari Headquarters

TEL: +81-898-23-2910 Office Hours: 9:00~17:00 Office Closed: Every Weekends and National Holidays  
E-mail: ima-syoko@pref.ehime.lg.jp

Official Website

<https://cycling-shimanami.jp/english/>



# Cycling Shimanami 2020 Applicant Guidelines

## Schedule

	Cycling Shimanami 2020	Co-located Events
<b>Saturday, October 24</b> Check-in -Events (Check-in is only the day before the event)	<b>[Imabari / Matsuyama / Onomichi check-in venue]</b> Applicant check-in (13:00~17:00) ● Imabari: Oshinden Park ● Matsuyama: Ehime Prefectural Office ● Onomichi: Shimanami Koryukan (Teatro Shell-rune)	<b>[Cycling Shimanami 2020 Cycle Event (subject to change)]</b> ● Imabari: Oshinden Park (11:00~17:30) ● Onomichi: Shimanami Koryukan (Teatro Shell-rune) (13:00~17:30)
<b>Sunday, October 25</b> Main Event Day	<b>[Course A (1,000 people)] (6:30~)</b> <b>[Course B~E (2,500 people)] (8:10~)</b>	<b>[Cycling Shimanami 2020 Cycle Event (subject to change)]</b> ● Imabari: Oshinden Park (9:30~17:30) ● Onomichi: Shinhama Kenei Uwaya (10:30~15:30) ● Kamijima: Yuge Port (12:30~16:30)

## Category

Course	Distance (Expressway)	Capacity (Premium Entry)	Entry Fee (Premium Entry) *Elementary and junior high school students	Bicycle Class	Start&Finish Venue	Number of Aid Stations	Time limit
<b>A</b> One-way course over Seto Inland Sea from Onomichi —Ride through Shimanami to the south— <b>IMABARI 70</b> Onomichi (Mukaishima) → Imabari (one-way)	about 70km (about 13km)	1,000 people (100 people)	12,000 yen (32,000 yen)	Sport	Mukaishima Sports Park Oshinden Park	3	Within 10 hours *However, after departing the start venue, each 33 km section should be completed within 1 hour 45 minutes.
<b>B</b> Longest course with a round trip over the Seto Inland Sea —Fully enjoy the attractions of Shimanami Kaido— <b>COMPLETE SHIMANAMI 140</b> Imabari → Onomichi (round trip)	about 140km (about 43km)	300 people (30 people)	16,000 yen (36,000 yen)		Imabari IC Oshinden Park	7	Within 9 hours *Includes approximately 30 minutes of boat travel time
<b>C</b> One-way course over the Seto Inland Sea from Imabari —Ride past Shimanami to the north— <b>ONOMICHI 70</b> Imabari → Onomichi (one-way)	about 70km (about 43km)	1,200 people (120 people)	13,000 yen (33,000 yen)		Imabari IC Shinhama Kenei Uwaya	3	Within 6.5 hours
<b>D</b> Course devoted to islands, traveling over eight islands —Traveling over two sea routes— Shimanami and Yumeshima— <b>YUMESHIMA 70</b> Imabari → Kamijima (one-way)	about 70km (about 35km)	300 people (30 people)	12,000 yen (32,000 yen)		Imabari IC Yuge Port *Yuge → Imabari temporary ferry (for a fee)	3	Within 7 hours *Includes approximately 30 minutes of boat travel time
<b>E</b> Fun course that can also be enjoyed by beginners and families —Gazing over scenery from the Kurushima-Kaikyo Bridge— <b>OSHIMA 40</b> Imabari → Oshima (round trip)	about 40km (about 12km) about 45km (about 12km)	[General Division] 670 people (N/A) [E-BIKE Guide Tour Division] 30 people (N/A)	4,500 yen (*2,000 yen) 7,000 yen (For rents 11,000 yen)	Sport City Tandem E-BIKE (Sports type bicycle with electric assist)	Imabari IC Oshinden Park	1	Within 8 hours

\*In addition to the entry fee, a separate handling charge is necessary. Please note that the entry fee is non-refundable in case of cancellation after the entry.  
 \*Applicants for A, B, C, D are required to provide the estimated time to complete the course by referring to their finish time in a past cycling event. Please be sure to include break times for each aid station.  
 \*Applicants for E are required to apply for a bicycle type. Please refer to the guidelines from the Official Home Page.  
 \*For tandem bikes (Applicants for E), registration as a pair is required. Entry fee is required for each person.  
 \*Consumption tax, insurance and ferry ticket fees are included in the entry fee.

## Participant Eligibility

All Courses	<ul style="list-style-type: none"> <li>Participants must judge themselves to be in good health and possessing the ability to complete their selected course within the time limit.</li> <li>Participants acknowledge the "Event Rules" and "Bicycle Class Rules".</li> </ul>
Course A	<ul style="list-style-type: none"> <li>For the safety management of the course, participants must check the course map on the official website and have the ability to complete the 33 km section (Expressway 13 km, General road 20 km) from the start venue (Mukaishima Sports Park) to the exit of the Express Way (Omishima IC) within 1 hour and 45 minutes.</li> </ul>
Course A, B, C, D	<ul style="list-style-type: none"> <li>Participants must be in their first year of high school and 15 years of age or older and have completed the same distance of the course to which they are applying in a previous cycling event.</li> </ul>
Course E [General Division]	<ul style="list-style-type: none"> <li>Participants must be in the 4th grade of elementary school and 9 years of age or older and able to ride on their own. Children in elementary school or junior high school must be accompanied by a parent or guardian at all times. (Written permission from a parent or guardian will be required in advance.)</li> </ul>
Course E [E-BIKE Guide Tour Division]	<ul style="list-style-type: none"> <li>Participants must be in their first year of high school and 15 years of age or older.</li> </ul>

## Application Period

\*A second round of registrations may occur in the beginning of July.

Premium Entry Course A, B, C, D	First-come-first-served basis	Registration period: 8 p.m. Monday, June 1 ~ 11:59 p.m. Friday, June 26 (Japan time)
General Entry	Lottery	Registration period: 8 p.m. Monday, June 1 ~ 11:59 p.m. Friday, June 26 (Japan time)

## Application Procedure

\*Online registration only. Register via the official website.

Premium Entry	Entry is accepted on a first-come-first-serve basis. Registration will close when capacity is reached. Please make your payment for entry and handling fees when you apply.
General Entry	Results of the lottery will be sent via email in the beginning of July. Selected applicants must pay the entry and handling fees by the specified due date.

## Notes at the time of entry

- Participation rights may not be transferred. It is not allowed to change any registered information, including registered name with application error.
- Application may be delayed or not be completed due to your internet connection or software.
- If the event is cancelled or a participant is not able to join the event due to reasons not attributable to the event committee, including weather, participant's violation of terms and conditions of the event, or tardiness, the entry fee is non-refundable.



## Course map

### total 5 Course

Highway Main Line Imabari IC → Innoshima Minami IC

- Course A Onomichi (Mukaishima) → Imabari (One Way) (about 70km, 1,000 people)  
Mukaishima Sports Park → Innoshima Minami IC → Omishima IC → Oshinden Park
- Course B Imabari → Onomichi (Round Trip) (about 140km, 300 people)  
Imabari IC → Ikuchijima Minami IC → Minato Oasis Onomichi → Oshinden Park
- Course C Imabari → Onomichi (One Way) (about 70km, 1,200 people)  
Imabari IC → Innoshima Minami IC → Shinhama Kenei Uwaya
- Course D Imabari → Kamijima (One Way) (about 70km, 300 people)  
Imabari IC → Ikuchijima Minami IC → Yuge Port
- Course E [General Division] Imabari → Oshima (Round Trip) (about 40km, 670 people)  
Imabari IC → Oshima Minami IC → Oshinden Park
- Course E [E-BIKE Guide Tour Division] Imabari → Oshima (Round Trip) (about 45km, 30 people)  
Imabari IC → Oshima Minami IC → Kiro-san outlook park → Oshinden Park

- Start/Finish Venue
- Aid Station
- Water Station/Toilet etc



## Gate opening time by course/finish line close time (planned)

Course	Starting Time	Expressway Closing time (subject to change) (Location, Distance from Start)	Closing time (subject to change) (Finish Venue)
<b>A</b> IMABARI 70 Onomichi (Mukaishima) → Imabari (one-way)	6:30~ / 35 participants every 1 minutes	8:45 (Ikuchijimaminami IC / about 28 km)	17:00 (Oshinden Park)
<b>B</b> COMPLETE SHIMANAMI 140 Imabari → Onomichi (round trip)	8:10~ / 300 participants start at once	11:10 (Setoda Bus Stop / about 38 km)	17:00 (Oshinden Park)
<b>C</b> ONOMICHI 70 Imabari → Onomichi (one-way)	8:15~ / 240 participants every 5 minutes	11:10 (Setoda Bus Stop / about 38 km)	15:00 (Shinhama Kenei Uwaya)
<b>D</b> YUMESHIMA 70 Imabari → Kamijima (one-way)	8:40~ / 300 participants start at once	11:00 (Setoda Parking Area / about 34 km)	16:00 (Yuge Port)
<b>E</b> OSHIMA 40 Imabari → Oshima (round trip)	8:45~ / 240 participants every 5 minutes		17:00 (Oshinden Park)